

H6..N globe valves, 2-way, with flanged ends



Selection: H6..N

| K_{vs} [m ³ /h] | DN [mm] | 2-way | Suitable linear actuator, 3-point | Suitable linear actuator, modulating DC 0 ... 10 V | Suitable linear actuator, modulating DC 0 ... 10 V with emergency control function |
|---------------------------------|------------|---------------|---|---|---|
| 0.63 | 15 | H611N | NV24-3 AC / DC 24 V | NV24-MFT AC / DC 24 V | NVF24-MFT AC / DC 24 V Emergency control function, pulling ²⁾ |
| 1.6 | 15 | H613N | | | |
| 4 | 15 | H615N | | | |
| 6.3 | 20 | H620N | | | |
| 10 | 25 | H625N | | | |
| 16 | 32 | H632N | | | |
| 25 | 40 | H640N | NV230-3 AC 230 V | NVY24-MFT AC / DC 24 V | NVF24-MFT-E AC / DC 24 V Emergency control function, pushing ³⁾ |
| 40 | 50 | H650N | | | |
| 58 | 65 | H664N | | | |
| 90 | 80 | H679N | | | |
| 63 | 65 | H665N | AV24-3 AC / DC 24 V AV230-3 AC 230 V | AV24-MFT AC / DC 24 V AVY24-MFT AC / DC 24 V | 1) Recommended for DN 32 – DN 50 and high closing pressures 2) Valve closed when deenergized 3) Valve open when deenergized |
| 100 | 80 | H680N | | | |
| 145 | 100 | H6100N | | | |



2-way globe valves with flange DN 15...100



For the modulating control of cold and warm water

Applications

- Water-side control of air handling units
- Water-side control in heating systems

Mode of operation

The globe valve is operated by an NV or AV series linear actuator. The linear actuators are controlled by a standard modulating or 3-point control system and move the cone of the valve, the throttling device, to the opening position dictated by the control signal.

Product features

Equal-percentage characteristic

Produced by the profiling of the valve cone.

Manual operation with NV / AV actuator
Using a hexagonal key to turn the actuator.

- For installation instructions, refer to pages 30...32
- For closing pressure / differential pressure, refer to page 8
- Sizing diagram for globe valves, refer to page 9
- The information provided on pages 33/34 regarding operation, installation, project design, commissioning and maintenance must be strictly observed.

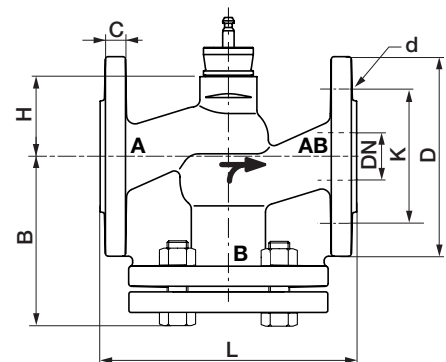
Technical data

H6..N

| | |
|--|--|
| Flow media | Cold and warm water, water with max. 50% volume of glycol |
| Temperature of medium | (-10°C) +5°C...+120°C (-10°C on request) |
| Rated pressure ps | 1600 kPa (PN 16) |
| Flow characteristic | Control path A-AB: equal-percentage (to VDI/VDE 2173) n(ep) = 3, optimized in opening range |
| Rangeability | DN 15 Sv > 50 DN 20...100 Sv > 100 |
| Leakage rate | Control path A-AB: max. 0.05 % of K_{vs} value |
| Pipe connection | Flange to ISO 7005-2 (PN 16) |
| Differential pressure Δp_{max} | 400 kPa (with large DN: $\Delta ps < \Delta p_{max}$) |
| Closing pressure Δps | See table on page 8 |
| Stroke | See Dimensions table |
| Valve closing point | Up (Δ) |
| Installation position | Vertical to horizontal |
| Maintenance | Maintenance-free |
| Materials | |
| Fitting | Cast iron GG25 |
| Valve cone | Brass |
| Valve seat | Cast iron GG25 |
| Valve stem | Stainless steel |
| Stem gland seal | EPDM O-ring |

Dimensions: H6..N

| DN [mm] | Stroke [mm] | Actuator Type | Dimensions [mm] | | | Flange | | | | Weight kg |
|------------|----------------|------------------|-----------------|-----|-----|--------|-----|------|----|--------------|
| | | | L | B | H | D | K | d | C | |
| 15 | 15 | NV.. | 130 | 81 | 46 | 95 | 65 | 4x14 | 14 | 4.8 |
| 20 | 15 | | 150 | 88 | 46 | 105 | 75 | 4x14 | 16 | 5.0 |
| 25 | 15 | | 160 | 93 | 52 | 115 | 85 | 4x14 | 16 | 6.3 |
| 32 | 15 | | 180 | 113 | 56 | 140 | 100 | 4x18 | 18 | 9.6 |
| 40 | 15 | | 200 | 118 | 64 | 150 | 110 | 4x18 | 18 | 11.9 |
| 50 | 15 | | 230 | 120 | 64 | 165 | 125 | 4x18 | 20 | 15.9 |
| 65 | 18 | | 290 | 140 | 100 | 185 | 145 | 4x18 | 20 | 23.8 |
| 80 | 18 | | 310 | 152 | 110 | 200 | 160 | 8x18 | 22 | 30.2 |
| 65 | 30 | AV.. | 290 | 140 | 100 | 185 | 145 | 4x18 | 20 | 23.8 |
| 80 | 30 | | 310 | 152 | 110 | 200 | 160 | 8x18 | 22 | 30.2 |
| 100 | 30 | | 350 | 172 | 125 | 220 | 180 | 8x18 | 24 | 41.3 |



A 3-way valve can be converted to a 2-way valve by removing the blind plug in port B.