



Rotary actuator for 2 and 3-way characterized control valves DN 15...80 and 2 and 3-way open-close ball valves DN 15...80

3-point actuator (AC 230 V)

3-point or open-close control

### Application

Operation of characterized control valves or open-close ball valves.

### Mode of operation

3-point control for characterized control valves. Open-close control for open-close ball valves.

### Product features

**Simple direct mounting** on the ball valve using only one screw. The mounting position in relation to the ball valve can be selected in 90° steps.

**Functional reliability:** The actuator automatically stops when the end stops are reached.

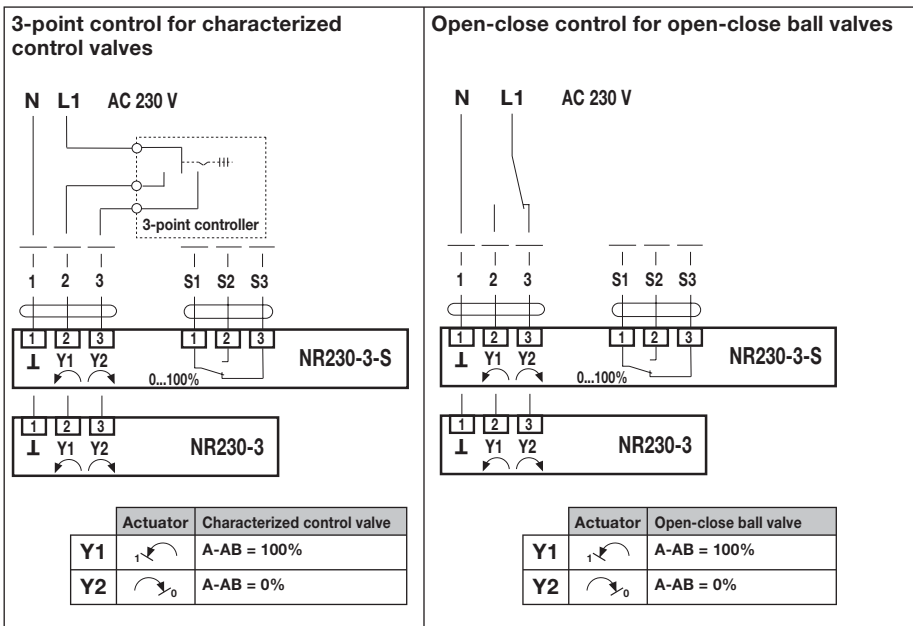
**Manual operation** possible by lever (temporary disengagement of the gearing latch by pressing, permanent disengagement by means of the rotary knob on the housing).

**Signalization:** 0...100%, with adjustable auxiliary switch (NR230-3-S only).

### Ordering examples:

- NR230-3 rotary actuator with R.. characterized control valve fitted  
– Order code: R..+NR230-3
- NR230-3 rotary actuator and R.. characterized control valve supplied separately  
– Order code: R../NR230-3
- NR230-SR rotary actuator packed loose  
– Order code: NR230-3+WNR  
(WNR mounting kit for ball valve)

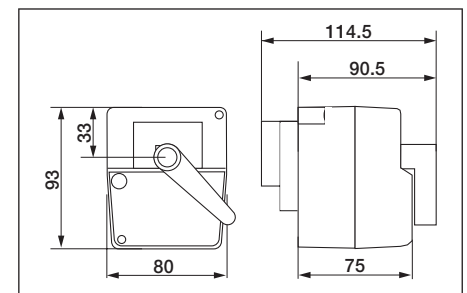
### Wiring diagram



### Technical data

Nominal voltage	AC 230 V 50/60 Hz	
Power supply range	AC 198...264 V	
For wire sizing	3.5 VA	
Power consumption	3.5 W	
Connection	Motor	Cable 1 m, 3 x 0.75 mm <sup>2</sup>
	Auxiliary switch (NR230-3-S)	Cable 1 m, 3 x 0.75 mm <sup>2</sup>
Auxiliary switch (NR230-3-S)	1 x EPU 5 (1) A, AC 250 V II	
	Adjustable switching point, 0...100% ◀	
Manual operation	Temporary and permanent disengagement of the gearing latch by means of the rotary knob on the housing	
Torque	min. 10 Nm (at nominal voltage)	
Angle of rotation	90°	
Running time	140 s	
Sound power level	max. 35 dB (A)	
Position indication	Scale plate 0...1	
Protection class	II Totally insulated	
Degree of protection	IP 40	
Ambient temperature range	0...+50°C (duty cycle 140/35 s)	
Temperature of medium	+5...+120°C (ball valve)	
Non-operating temperature	-30...+80°C	
Humidity test	To EN 60730-1	
EMC	CE according to 89/336/EEC	
LV Directive	CE according to 73/23/EEC	
Mode of operation	Type 1.B EN 60730-1	
Maintenance	Maintenance-free	
Weight	0.5 kg (without ball valve)	

### Dimensions [mm]



### Important

- Suitable characterized control valves and open-close ball valves: pages 8 to 11
- Use and safety: page 2
- Installation instructions: page 34
- Installation dimensions: page 34