

NR24-3(-S) rotary actuator for characterized control valves and open-close ball valves



Rotary actuator for 2 and 3-way characterized control valves DN 15...80 and 2 and 3-way open-close ball valves DN 15...80

3-point actuator (AC 24 V)

3-point or open-close control

Application

Operation of characterized control valves or open-close ball valves.

Mode of operation

3-point control for characterized control valves. Open-close control for open-close ball valves.

Product features

Simple direct mounting on the ball valve using only one screw. The mounting position in relation to the ball valve can be selected in 90° steps.

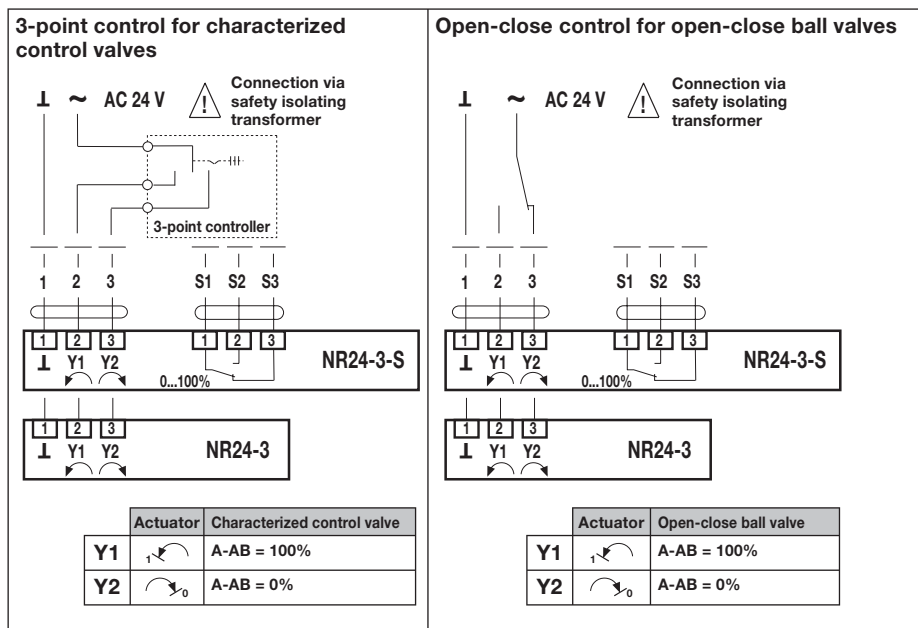
Functional reliability: The actuator automatically stops when the end stops are reached.

Manual operation possible by lever (temporary disengagement of the gearing latch by pressing, permanent disengagement by means of the rotary knob on the housing).

Ordering examples:

- NR24-3 rotary actuator with R.. characterized control valve fitted
– Order code: R..+NR24-3
- NR24-3 rotary actuator and R.. characterized control valve supplied separately
– Order code: R../NR24-3
- NR24-3 rotary actuator packed loose
– Order code: NR24-3

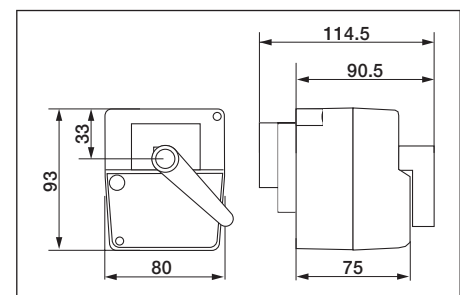
Wiring diagram



Technical data

Nominal voltage	AC 24 V 50/60 Hz
Power supply range	AC 19.2...28.8 V
For wire sizing	1.5 VA
Power consumption	1.5 W
Connection	Motor Cable 1 m, 3 x 0.75 mm ² Auxiliary switch (NR24-3-S) Cable 1 m, 3 x 0.75 mm ²
Auxiliary switch (NR24-3-S)	1 x EPU 5 (1) A, AC 250 V II Adjustable switching point, 0...100% \triangleleft
Manual operation	Temporary and permanent disengagement of the gearing latch by means of the rotary knob on the housing
Torque	min. 10 Nm (at nominal voltage)
Angle of rotation	90°
Running time	140 s
Sound power level	max. 35 dB (A)
Position indication	Scale plate 0...1
Protection class	III Safety extra-low voltage
Degree of protection	IP 40
Ambient temperature range	0...+50°C (together with ball valve)
Temperature of medium	+5...+120°C (ball valve)
Non-operating temperature	-30...+80°C
Humidity test	To EN 60730-1
EMC	CE according to 89/336/EEC
LV Directive	CE according to 73/23/EEC
Mode of operation	Type 1.B EN 60730-1
Maintenance	Maintenance-free
Weight	0.5 kg (without ball valve)

Dimensions [mm]



Important

- Suitable characterized control valves and open-close ball valves: pages 8 to 11
- Use and safety: page 2
- Installation instructions: page 34
- Installation dimensions: page 34