



Short-stroke actuators for short-lift valves, max. nominal stroke 5.5 mm

3-point actuators
NRDVX24-3-T.. AC 24 V
NRDVX230-3-T.. AC 230 V

Applications

The NRDVX...-3-T... actuator is intended for motorizing Cazzaniga and Siemens short-lift valves.

Mode of operation

3-point control is employed for short-lift valves used in control applications and Open/Close control for shut-off functions.

Product features

Easy direct mounting on the body of the valve. The stroke is adjusted at the factory to suit the type of valve. The mounting bracket, suitable for the particular type of valve, is an integral part of the actuator.

Functional reliability

The electric motor is de-energized when the actuator runs on to its internal end-stops.

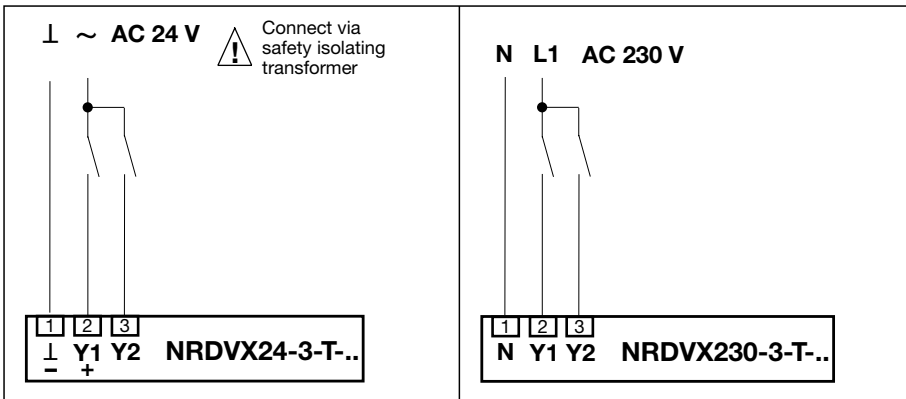
Manual operation

The actuator can be operated manually with a hand lever (temporary disengagement by simply depressing the rotary knob on the housing and permanent disengagement by rotating it).

When the manual lever is rotated clockwise the valve moves in the close direction.

Installation instructions, Page 7

Wiring diagrams

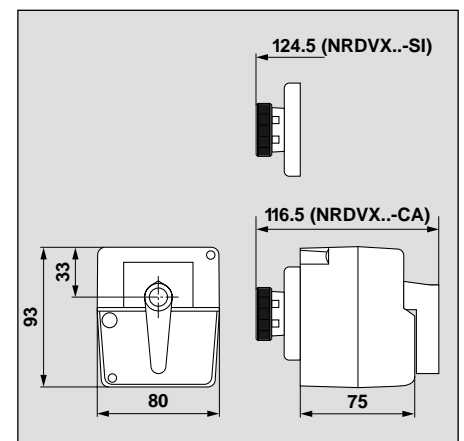


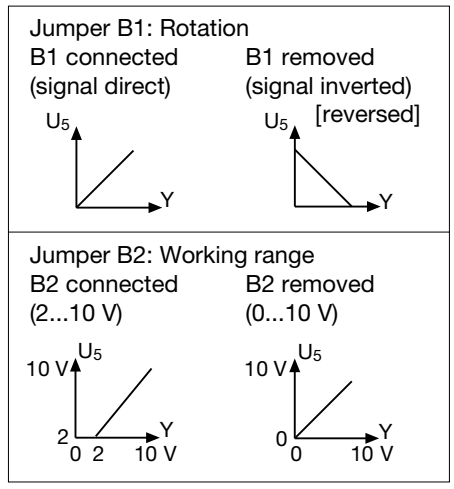
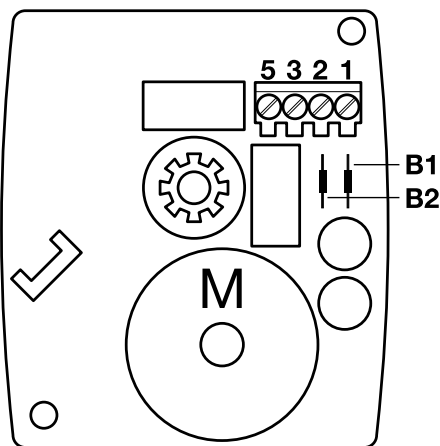
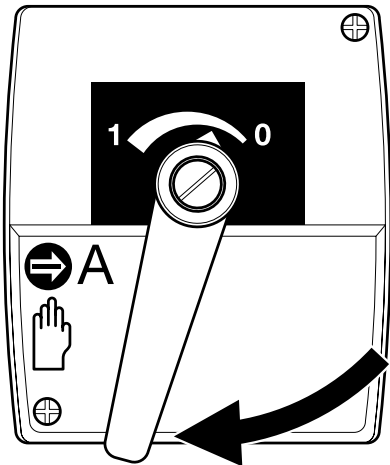
NRDVX....-T..., suitable for the following makes of valve

	Version	Valve type	DN (mm)	kvs (m³/h)	Actuator type
Cazzaniga	2-way	V02BM.. LN	15...40	3.9...14.5	NRDVX....-T-CA
	3-way	V03BM.. LN	15...40	3.9...14.5	
Siemens	2-way	VVG44..	15...40	0.25...25	NRDVX....-T-SI
	2-way	VVI52..	15	0.25...2,5	
	3-way	VXG44..	15...40	0.25...25	

Technical data	NRDVX24-3-T..	NRDVX230-3-T..
Nominal voltage	AC 24 V 50/60 Hz	AC 230 V 50/60 Hz
For wire sizing	1.5 VA	2.5 VA
Power consumption	1.5 W	2.5 W
Connecting terminals	2 x 0.75 mm² or 1 x 1.5 mm²	
Nominal stroke	5.5 mm	
Actuating force	500 N	
Manual operation	temporary or permanent disengagement by rotary knob	
Running time	140 s	
Sound power level	max. 35 dB (A)	
Position indication	scale plate 0...1	
Protection class	⚡ (safety extra-low voltage)	II (all-insulated)
Degree of protection	IP40	
Temperature of medium	+5° ... 100°C (including valve)	
Ambient temp. range	0° ... +50°C	
Non-operating temp.	-30° ... +80°C	
Humidity test	to EN 60730-1	
EMC	CE according to 89/336/EEC, 92/31/EEC, 93/68/EEC	
LV Directive	CE according to 73/23/EEC	
Direction of rotation	as-wired	
Maintenance	maintenance-free	
Weight	0.5 kg (without valve)	0.5 kg (without valve)

Dimensions





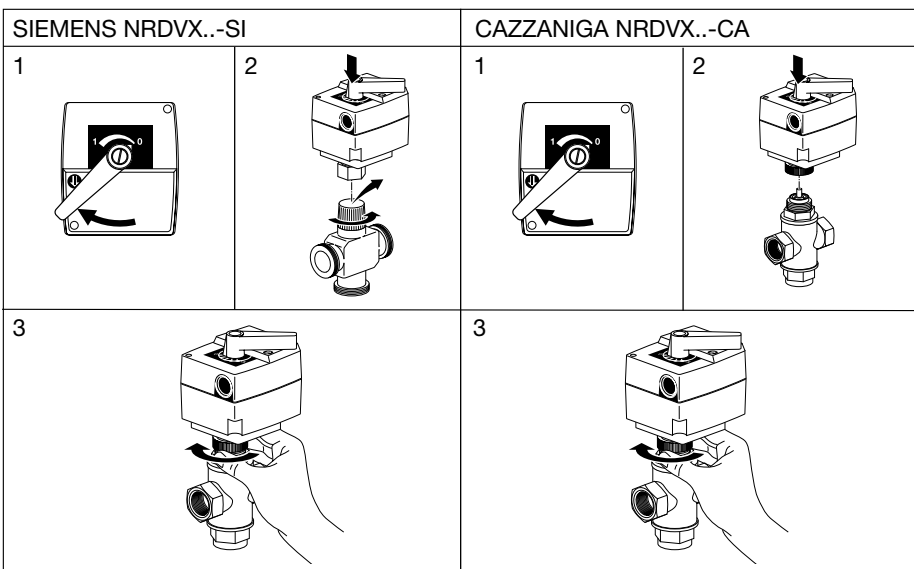
Manual operation

If the black rotary knob is depressed and turned from position A (Automatic) to the hand symbol, manual operation will be permanently engaged. Then, any control signal that might be received will not be acted upon.

The manual operating system incorporates a slipping clutch and is overload-proof. When the manual lever (black) is moved clockwise the actuator spindle retracts and the valve closes (Position 0).

Operating controls of the NRDVX24-SR-T..

Jumpers B1 and B2 will be found under the lid of the housing. In order to gain access to them first loosen the central screw of the black hand lever and remove the two Philips screws securing the lid.



Installing the NRDVX..-T on short-lift valves

- 1) Set the manual operating lever to «Hand». Rotate the black lever clockwise to the end-stop. The lever should now be in the «Zero» position. If it is not, loosen the central screw of the lever, pull it out and turn to the «Zero» position. Then re-secure the lever by tightening the central screw finger-tight.
- 2) Screw the actuator on to the thread of the valve neck.
- 3) Tighten the valve neck connection and return the manual operating lever to the «A» position (Automatic).