

**Rotary actuator for 2 and 3-way characterized control valves
DN 15...80**

Modulating actuator (AC/DC 24 V)

Control DC 0...10 V

Running time 35 s

Adjustable operating range

Locked-rotor protection

No override synchronization in case of power failure

Application

Operation of characterized control valves.

Mode of operation

Modulating control is effected by means of a standard 0...10 V DC control signal. A synchronization process starts when the power supply is switched on. The actuator moves to the closed position ("closed" limit switch), where it is synchronized.

Product features

Simple direct mounting on the characterized control valve using only one screw. The mounting position in relation to the characterized control valve can be selected in 90° steps.

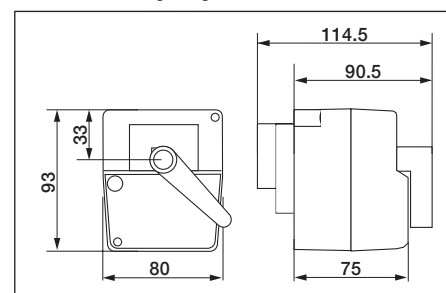
Functional reliability: The actuator is overload-proof and automatically stops when the end stops are reached.

Manual operation possible by lever (temporary disengagement of the gearing latch by pressing, permanent disengagement by means of the rotary knob on the housing).

Ordering examples:

- a) NRY24-SR rotary actuator with R.. characterized control valve fitted
– Order code: R..+NRY24-SR
- b) NRY24-SR rotary actuator packed loose
– Order code: NRY24-SR+WNR
(WNR mounting kit for ball valve)

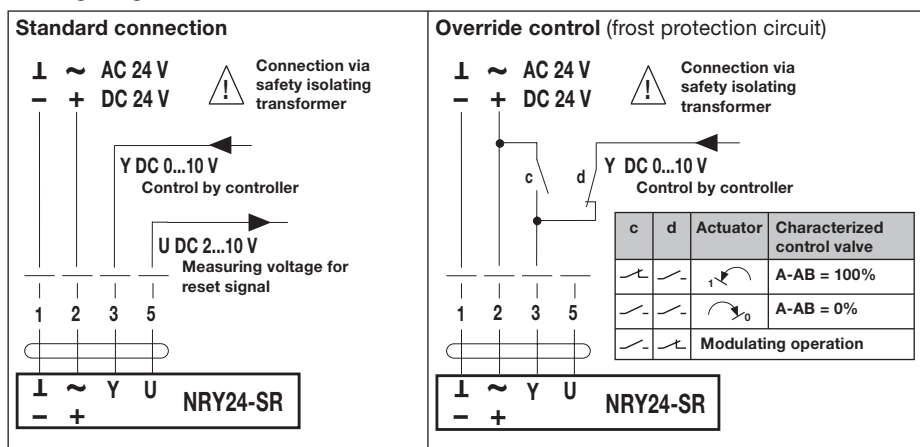
Dimensions [mm]



Important

- Suitable characterized control valves: pages 8 and 9
- Use and safety: page 2
- Installation instructions: page 34
- Installation dimensions: page 34

Wiring diagram



Technical data

Nominal voltage	AC 24 V 50/60 Hz, DC 24 V
Power supply range	AC 19.2...28.8 V, DC 21.6...28.8 V
For wire sizing	4 VA
Power consumption	2.5 W
Connection	Cable 1 m, 4 x 0.75 mm ²
Control	DC 0...10 V @ 100 kΩ input impedance
Operating range	DC 2...10 V for 0...100% ◁ (15...90°)
Position feedback	DC 2...10 V (max. 1 mA) for 0...100% ◁ (15...90°)
Uni-rotation	± 5%
Manual operation	Temporary and permanent disengagement of the gearing latch by means of the rotary knob on the housing
Torque	min. 10 Nm (at nominal voltage)
Running time	35 s
Sound power level	max. 50 dB (A)
Position indication	Scale plate 0...1
Protection class	III Safety extra-low voltage
Degree of protection	IP 40
Ambient temperature range	0...+50°C
Temperature of medium	+5...+120°C (ball valve)
Non-operating temperature	-30...+80°C
Humidity test	To EN 60730-1
EMC	CE according to 89/336/EEC
Mode of operation	Type 1 EN 60730-1
Maintenance	Maintenance-free
Weight	0.5 kg (without ball valve)